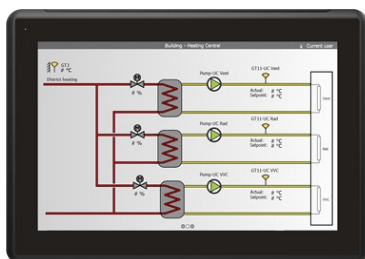


PP875H

Freelance hardware selector



Touchscreen panels with brilliant TFT/LED display colors and multi-protocol connectivity. The black range of Panel 800 comprises of PP875M, PP875H and PP886M that are easy-to use HMI with comprehensive and integrated templates and libraries for every conceivable process you need. All black panels are equipped with high-resolution graphics in TFT/LED display. Most models offer wide screen, high resolution display for increased efficiency and excellent operator interaction.

Features and benefits

- **Easy to use**
A fully deployable HMI with comprehensive and integrated templates and libraries for every conceivable process. The Panel Builder tool, with familiar Microsoft® Windows® environment along with multiple language support results in quick, easy and efficient engineering.
- **State-of-the-arts graphics**
Vector-based, high-resolution graphics in TFL/LED display, with icon-based interface, navigation and control.
- **Robust and reliable**
Panel 800 is constructed in a strong yet lightweight diecast, powder-coated aluminum housing. Front casing withstands wet, dusty and demanding environments. Operating temperatures ranging between -10° C to + 60° C with maximum 85% humidity.
- **Truly open platform**
Built on open architecture and technologies that accompany the .NET framework, these panels are capable of multi-brand controller connectivity. A multitude of connection options are available for local communication, expansion, remote access and more.
- **Digital output**
2 x DO Solid state relay, 0.5A@24VDC.

General info

| | |
|---------------------------|---|
| Article number | 3BSE092983R1 |
| Category | Black |
| Display type | Touch |
| Display size | 7" |
| Brightness | 1000 cd/m ² |
| Display resolution, ratio | 800 x 480 pixels |
| Processor | ARM9 (1 GHz) |
| Main memory | 2 GB |
| External storage media | 1 × SD card slot (or SDHC with latest image loaded) |
| Dimension WxHxD (mm) | 204 x 143 x 50 mm |
| Power supply | 24 V DC (18 to 32 VDC) |
| Operating temperature | -10 °C to +60 °C |

| Detailed data | |
|---------------------------|--|
| Dimming | Marine optimized dimming down to 0.5 cd/m² |
| Interaction type | Resisitive touch |
| Realtime clock | Yes |
| Ethernet (shielded RJ 45) | 2 x 1x10/100 Base-T |
| USB | 1 × USB Host 2.0, 500mA |
| Serial port | 1 × RS232, 1 × RS422/485, 1 x RS485 (only if COM 2 is RS485) |

| Environment and certification | |
|-------------------------------|---|
| Frame material, front foil | Black powder-coated aluminum |
| Power consumption | 21.6 W |
| Protection (front/rear) | Front IP65, NEMA 4X/12 and UL Type 4X/12. Rear IP20 |
| Relative operating humidity | 5 % – 85 % non-condensed |
| Storage temperature | -20 °C to +70 °C |
| Vibration and shock | 1 G / 15 G |
| CE-marking | CE, FCC, KCC |
| UL | UL 61010-2-201 |
| Marine | DNV, KR, GL, LR, ABS, CCS |
| RoHS compliance | DIRECTIVE/2011/65/EU |
| WEEE compliance | DIRECTIVE/2012/19/EU |

| Dimensions | |
|--|---------------------------|
| Weight | 0.8 kg |
| Dimension W×H×D (mm) | 204 x 143 x 50 mm |
| Cut-out dimension W×H (mm) | 189 x 128 mm |
| Mounting depth mm. (Including clearance) | 43 (143) mm |
| Mounting | Panel Mount, VESA 75 x 75 |

**solutions.abb/freelance
solutions.abb/controlsystems**

We reserve the right to make technical changes to the products or modify the contents of this document without prior notice. With regard to purchase orders, the agreed particulars shall prevail. ABB does not assume any responsibility for any errors or incomplete information in this document.

We reserve all rights to this document and the items and images it contains. The reproduction, disclosure to third parties or the use of the content of this document – including parts thereof – are prohibited without ABB's prior written permission.

Copyright© 2024 ABB All rights reserved